







**BETTS**  
Metal Sales

**Singular Round**

- 1.00ct 6.5mm 
- 0.75ct 6.0mm 
- 0.50ct 5.0mm 
- 0.33ct 4.5mm 
- 0.25ct 4.0mm 

**Princess Cut**

- 1.00ct 5.5mm 
- 0.50ct 4.5mm 
- 0.33ct 4.0mm 
- 0.25ct 3.5mm 



Betts Metal Sales have an *extensive* stock range of wedding rings and are now delighted to introduce a range of pre-set diamond mounts, designed to complement our large stock holding.

We are able to provide all designs in a wide range of alloys with varying sizes for your centre stone.

**Can't find it? Betts will**

We aim to be completely flexible in meeting your needs, meaning that we can produce almost anything you want.

All UK manufactured, the metal used in our rings is of the highest technical quality. This assures the manufacturing jeweller that the grain size, malleability and colour is always consistent.

We can also assure you that the diamonds are of high quality, colour G and grade VS1, they are also non conflict.

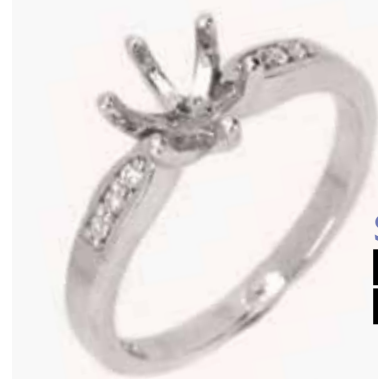
Ask to see our full range of wedding rings, sheet, wire, findings, loose chain and finished jewellery.

[www.bettsmetalsales.com](http://www.bettsmetalsales.com)

T: 0121 233 2413



**S20042**  
18ct Weight 3.9gms  
Diamonds x4 / 0.25ct



**S06048**  
18ct Weight 3.8gms  
Diamonds x6 / 0.06ct



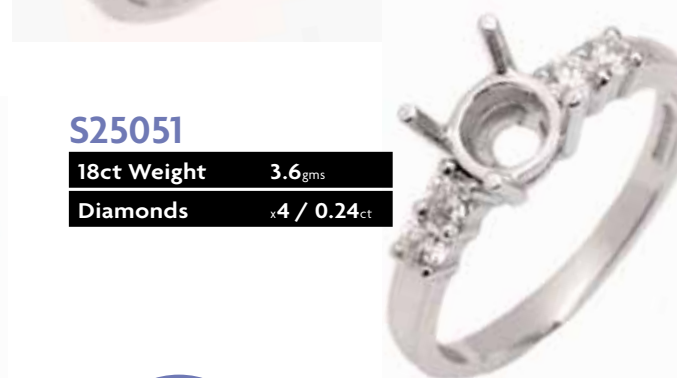
**S32053**  
18ct Weight 3.8gms  
Diamonds x32 / 0.32ct



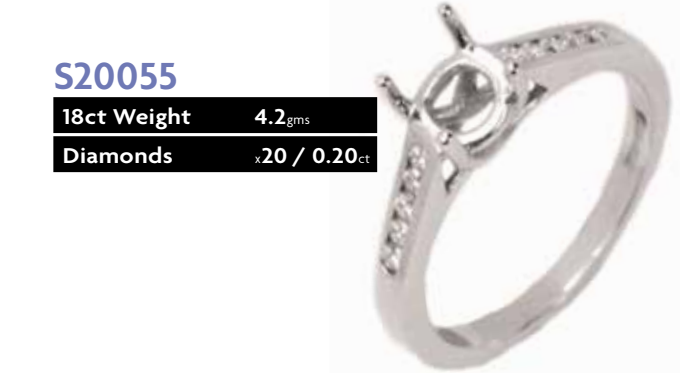
**S24058**  
18ct Weight 3.1gms  
Diamonds x24 / 0.10ct



**S20045**  
18ct Weight 3.4gms  
Diamonds x20 / 0.20ct



**S25051**  
18ct Weight 3.6gms  
Diamonds x4 / 0.24ct



**S20055**  
18ct Weight 4.2gms  
Diamonds x20 / 0.20ct



**S25061**  
18ct Weight 3.8gms  
Diamonds x16 / 0.20ct



Centre diamonds can be ordered and set if required.



**S20046**  
18ct Weight 4.7gms  
Diamonds x20 / 0.20ct



**S20052**  
18ct Weight 3.6gms  
Diamonds x16 / 0.20ct



**S10056**  
18ct Weight 3.6gms  
Diamonds x10 / 0.10ct



**S20063**  
18ct Weight 2.9gms  
Diamonds x20 / 0.20ct

When ordering please specify size required for the centre stone.

When ordering please specify size required for the centre stone.

When ordering please specify size required for the centre stone.

When ordering please specify size required for the centre stone.

[www.bettsmetalsales.com](http://www.bettsmetalsales.com)

T: 0121 233 2413

[www.bettsmetalsales.com](http://www.bettsmetalsales.com)

T: 0121 233 2413

## Need a Wedding Ring?

Just a small selection of our huge stock range...



**S20064**

**18ct Weight** 3.4gms  
**Diamonds** x20 / 0.20ct



Centre diamonds can be ordered and set if required.

**S25072**

**18ct Weight** X.XXgms  
**Diamonds** x36 / 0.25ct



**S30066**

**18ct Weight** 3.3gms  
**Diamonds** x28 / 0.30ct



**S24068**

**18ct Weight** 3.5gms  
**Diamonds** x24 / 0.24ct

When ordering please specify size required for the centre stone.



**S26073**

**18ct Weight** 3.3gms  
**Diamonds** x4 / 0.26ct

Centre diamonds can be ordered and set if required.



All weights are approximate and are based on a 1ct centre stone ring.

When ordering please specify size required for the centre stone.



### FLAT PROFILE

We offer a wide range of ladies and gents rings from stock and we are also able to manufacture to order.



### COURT SHAPE PROFILE

This classic profile is also stocked in platinum, palladium, silver and in gold red, white & yellow alloys.



### FLAT COURT PROFILE

An increasingly popular style that is both comfortable and stylish, huge range of weights, widths, sizes and metal options in stock.



### D SHAPE PROFILE

Continues to be a popular shape and is stocked, as is the rest of the range, in a variety of different widths and weights.

Ask about our silver sample set.  
72 finished rings with every profile, width and gauge.  
Don't forget we can also finish rings to order.

Please call us on **0121 233 2413** or register on [www.bettsmetalsales.com](http://www.bettsmetalsales.com)



[www.bettsmetalsales.com](http://www.bettsmetalsales.com)  
T: 0121 233 2413